

**MOULDED PLASTIC NOZZLES**

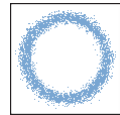
PN/ PO series hollow cone nozzles made by plastic moulding, offer a high chemical resistance and low prices. They are tangential nozzles and produce a hollow cone spray of atomized droplets. As they have a large free passage and no swirling vane inside their body, they are highly clog-resistant. PN/ PO nozzles are efficient, cost-effective and widely used in many processing lines. Moreover, they can be easily assembled in large quantity onto pipe manifolds.



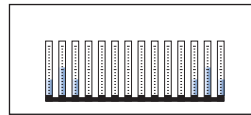
■ **Thread specification**

Male thread (PO series): BSPT  
Female thread (PN series): BSP

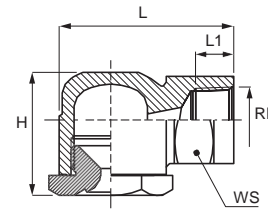
■ **Max operation temperature: 90°C**



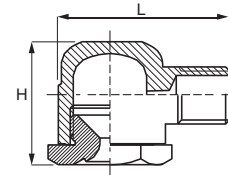
Spray section



Concave distribution



PN - Female



PO - Male

HOLLOW CONE NOZZLES

70°	RF	PNS	POS	Code	DE	DU	Capacity at different pressure values (l/min) (bar)								Dimensions mm							
	RG	Female	Male				0.5	0.7	1.0	2.0	3.0	5.0	7.0	10	H	L	L1	WS				
inch					mm	mm																
	3/8"			1170	2.4	2.5	0.69	0.82	0.98	1.39	1.70	2.19	2.60	3.10	31	44	20	22				
80°	RF/RG	PNT	POT	Code	DE	DU	0.5	0.7	1.0	2.0	3.0	5.0	7.0	10	H	L	L1	WS				
	3/8"			1260	2.7	3.3	1.06	1.26	1.50	2.12	2.60	3.36	3.97	4.75	31	44	20	22				
90°	RF/RG	PNU	POU	Code	DE	DU	0.5	0.7	1.0	2.0	3.0	5.0	7.0	10	H	L	L1	WS				
	3/8"	•	•	1390	3.6	2.8	1.59	1.88	2.25	3.18	3.90	5.03	5.96	7.12	31	44	20	22				
				1670	3.6	6.0	2.74	3.24	3.87	5.47	6.70	8.65	10.2	12.2								
				1850	4.4	5.2	3.47	4.11	4.91	6.94	8.50	11.0	13.0	15.5								
				2115	4.8	6.0	4.69	5.56	6.64	9.39	11.5	14.8	17.6	21.0								
				2220	6.4	9.1	8.98	10.6	12.7	18.0	22.0	28.4	33.6	40.2								
1/2"	•			2320	6.4	13.1	13.1	15.5	18.5	26.1	32.0	41.3	48.9	58.4	42	55	35	30				
				2398	9.1	11.1	16.2	19.2	23.0	32.5	39.8	51.4	60.8	72.7								
130°	RF/RG	PNY	POY	Code	DE	DU	0.5	0.7	1.0	2.0	3.0	5.0	7.0	10	H	L	L1	WS				
	3/8"	•	•	1170	2.0	2.5	0.69	0.82	0.98	1.39	1.70	2.19	2.60	3.10	31	44	20	22				
				1260	2.0	3.2	1.06	1.26	1.50	2.12	2.60	3.36	3.97	4.75								
				1390	3.6	3.2	1.59	1.88	2.25	3.18	3.90	5.03	5.96	7.12								
				1460	3.6	4.0	1.88	2.22	2.66	3.76	4.60	5.94	7.03	8.40								
				1570	3.6	5.0	2.33	2.75	3.29	4.65	5.70	7.36	8.71	10.4								
				1670	3.6	6.0	2.74	3.24	3.87	5.47	6.70	8.65	10.2	12.2								
				1850	4.4	5.6	3.47	4.11	4.91	6.94	8.50	11.0	13.0	15.5								
				1980	4.4	6.0	4.00	4.73	5.66	8.00	9.80	12.7	15.0	17.9								
				2128	4.8	6.0	5.23	6.18	7.39	10.5	12.8	16.5	19.6	23.4								
				2208	6.4	7.1	8.49	10.0	12.0	17.0	20.8	26.9	31.8	38.0								
				2220	6.4	8.7	8.98	10.6	12.7	18.0	22.0	28.4	33.6	40.2								
				1/2"	•	•		2129	9.1	4.6	5.23	6.18	7.39	10.5	12.8	16.5	19.6	23.4	42	55	35	30
								2209	9.1	6.4	8.49	10.0	12.0	17.0	20.8	26.9	31.8	38.0				
2221	9.1	7.1	8.98					10.6	12.7	18.0	22.0	28.4	33.6	40.2								
2320	9.1	8.7	13.1					15.5	18.5	26.1	32.0	41.3	48.9	58.4								
		•	•	2420	9.1	10.3	17.1	20.3	24.2	34.3	42.0	54.2	64.2	76.7								

**PO MALE THREAD NOZZLES**

ZPB fastening clamps in plastic usually connect to 3/8" female threads. They are flexible, durable and low cost. Please see more on page 86.

**TYPICAL APPLICATIONS**

**Washing:** exhaust scrubbers, parts cleaning, pre-treatment in coating process, dust and foam control, filter spraying

**Cooling:** wire cooling, plastic pipe cooling

**Other applications:** humidification systems, etc.



PN (Female) + ZPB Plastic pipe clamp

HOW TO MAKE UP THE NOZZLE CODE

EX.: PNS 1170 D6

